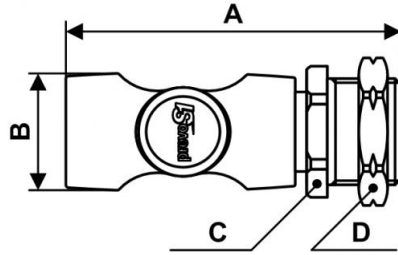


Bulkhead coupler



| | | | |
|--|---|-------------------------------------|---|
| <u>NPT female thread</u> 1/4" FNPT | <u>Drill Ø (in)</u> 1.06 | <u>Panel depth (in)</u> 0.43 | <u>Technology</u> "One push" safety system (avoids hose whip) |
| <u>Operating pressure</u> 29 to 174 psi | <u>Flow rate at 100 psi</u> 34 cfm (?P = 10 psi) | <u>ID Passage</u> 1/4" body size | <u>Temperature</u> +5°F to +158°F |
| <u>Construction</u> Composite body | <u>Highlight</u> Anti-static Non scratch | | |

| Description | | | |
|-------------------|-------------------|--------------|------------------|
| Reference | NPT female thread | Drill Ø (in) | Panel depth (in) |
| ISI 062201 | 1/4" FNPT | 1.06 | 0.43 |



Dimensions

| Reference | A inch | B inch | C inch | D inch |
|-------------------|-----------------|-------------------|-------------------|------------------|
| ISI 062201 | 0.2755905511811 | 0.098425196850394 | 0.095144356955381 | 0.10498687664042 |