

Female bulkhead connector - Fractional inch tube to female NPT - RPD TR



NPT female thread

1/8" FNPT

For tube OD (in)

5/32

Operating pressure

0 to 145 psi

Temperature

+32°F to +140°F

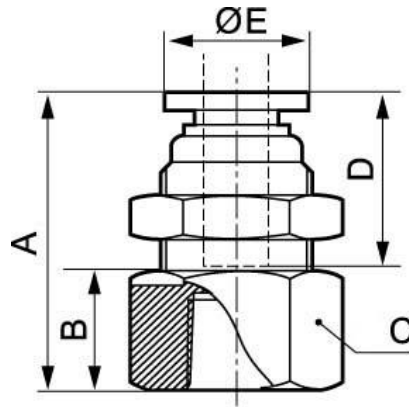
Construction

Polymer and nickel-plated brass

Description

Reference	NPT female thread	For tube OD (in)
RPD TR5320	1/8" FNPT	5/32
RPD TR3120	1/8" FNPT	3/16
RPD TR3121	1/4" FNPT	3/16
RPD TR4120	1/8" FNPT	1/4
RPD TR4121	1/4" FNPT	1/4
RPD TR5120	1/8" FNPT	5/16
RPD TR5121	1/4" FNPT	5/16

Reference	NPT female thread	For tube OD (in)
RPD TR5122	3/8" FNPT	5/16
RPD TR3821	1/4" FNPT	3/8
RPD TR3822	3/8" FNPT	3/8
RPD TR2122	3/8" FNPT	1/2
RPD TR2123	1/2" FNPT	1/2



Dimensions

Reference	A inch	B inch	C inch	D inch	E inch
RPD TR5320	1.063	0.433	1677.717	0.63	0.394
RPD TR3120	1.063	0.433	1677.717	0.669	0.504
RPD TR3121	1.142	0.551	1680.118	0.669	0.504
RPD TR4120	1.083	0.433	1680.118	0.669	0.504
RPD TR4121	1.201	0.551	1680.118	0.669	0.504
RPD TR5120	1.122	0.433	1680.118	0.709	0.543
RPD TR5121	1.24	0.551	1680.118	0.709	0.543
RPD TR5122	1.378	0.591	1762.992	0.709	0.543
RPD TR3821	1.358	0.551	1762.992	0.76	0.661
RPD TR3822	1.398	0.591	1762.992	0.76	0.661
RPD TR2122	1.457	0.591	1762.992	0.827	0.807
RPD TR2123	1.535	0.709	0.039	0.827	0.807