

## Unequal plug in Y - Metric tube - RPY PT



For tube OD (x2) (mm)

4

Fitting ID (mm)

6

Operating pressure

0 to 145 psi

Temperature

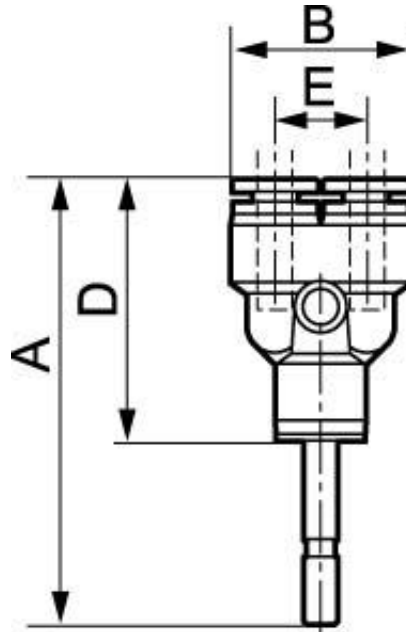
+32°F to +140°F

Construction

Polymer and nickel-plated brass

### Description

| Reference         | For tube OD (x2) (mm) | Fitting ID (mm) |
|-------------------|-----------------------|-----------------|
| <b>RPY PT0604</b> | 4                     | 6               |
| <b>RPY PT0806</b> | 6                     | 8               |
| <b>RPY PT1008</b> | 8                     | 10              |
| <b>RPY PT1210</b> | 10                    | 12              |



**Dimensions**

| Reference         | A inch | B inch | D inch | E inch |
|-------------------|--------|--------|--------|--------|
| <b>RPY PT0604</b> | 0.787  | 1.22   |        |        |
| <b>RPY PT0806</b> | 2.165  | 0.512  |        |        |
| <b>RPY PT1008</b> | 2.362  | 1.378  |        |        |
| <b>RPY PT1210</b> | 0.709  |        |        |        |