

## Bulkhead fitting - Metric tube - RPU TT



**Panel thickness (in)**

0.51

**Drill Ø (in)**

0.5

**For tube OD (mm)**

4

**Operating pressure**

0 to 145 psi

**Temperature**

+32°F to +140°F

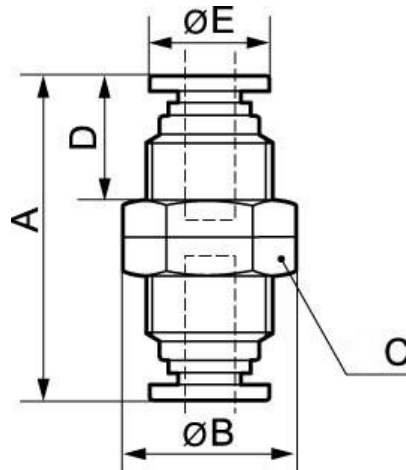
**Construction**

Polymer and nickel-plated brass

### Description

Reference	Panel thickness (in)	Drill Ø (in)	For tube OD (mm)
<b>RPU TT0404</b>	0.51	0.5	4
<b>RPU TT0606</b>	0.51	0.6	6
<b>RPU TT0808</b>	0.59	0.7	8
<b>RPU TT1010</b>	0.59	0.8	10

Reference	Panel thickness (in)	Drill Ø (in)	For tube OD (mm)
<b>RPU TT1212</b>	0.59	0.9	12
<b>RPU TT1616</b>	0.79	1.0	16



Dimensions					
Reference	A mm	B mm	C mm	D mm	E mm
<b>RPU TT0404</b>	34	16.5	14	13	10
<b>RPU TT0606</b>	36	20	17	14	12.8
<b>RPU TT0808</b>	39.5	22	19	15.8	13.8
<b>RPU TT1010</b>	40.6	28	24	16.5	16.8
<b>RPU TT1212</b>	44.5	30.5	26	17.8	19.8
<b>RPU TT1616</b>	52	32.5	28	18.3	23.8