

## Straight male connector - Metric tube to male BSPP - RCD MG



**BSPP male thread**

1/8" MBSP

**For tube OD (mm)**

4

**Operating pressure**

0 to 145 psi

**Temperature**

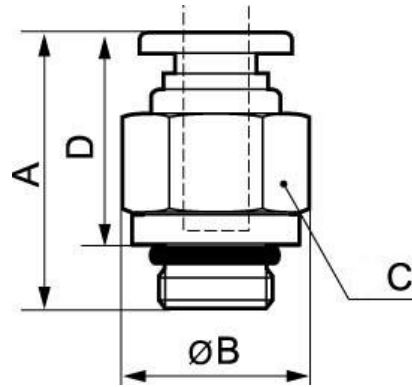
+32°F to +140°F

**Construction**

Polymer and nickel-plated brass

### Description

Reference	BSPP male thread	For tube OD (mm)
<b>RLD MG0600</b>	G 1/8	6
<b>RLD MG0400</b>	G 1/8	4
<b>RCD MG0400</b>	1/8" MBSP	4
<b>RCD MG0600</b>	1/8" MBSP	6



**Dimensions**

Reference	A inch	B inch	C inch	D inch
<b>RLD MG0600</b>	0.394			
<b>RLD MG0400</b>	0.591	0.394	0.394	
<b>RCD MG0400</b>	15	11.5	10	10
<b>RCD MG0600</b>	17.5	11.5	10	12.5